



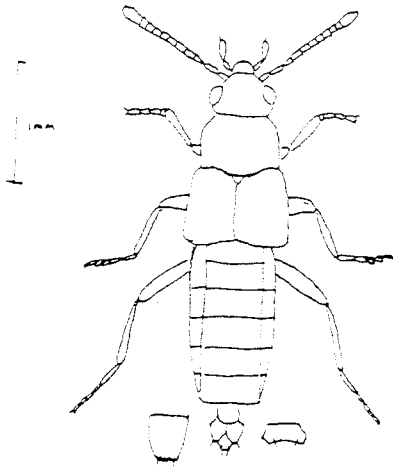
C R S NEWSLETTER

Beetle recording in Leicestershire

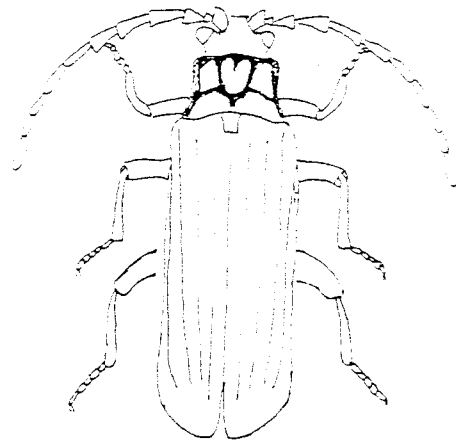
Produced by the Leicestershire Coleoptera Recording Scheme

No.3

April 1986



Left paramere
Right aedeagus } All drawn to scale



Brachyusa concolor Erichson

Platycis minuta Fabricius

These illustrations depict two noteworthy captures made during field meetings in 1984. The specimen of B. concolor was recently discovered hiding in a batch of unidentified staphylinids put by for a rainy day. It was taken by me at The Wailes, Frisby on the Wreake on 28th April, 1984 and is an addition to the list given in the last newsletter. People I have spoken to seem to be unsure about its current status. Although there are a good scattering of records north to Worcestershire in Fowler (1888) and Fowler and Donisthorpe (1913), I know of no other modern British records, except for one specimen collected by me on mud by the River Soar, Barrow on 20th April 1985.

P. minuta is a pretty beetle with red elytra and black forebody and appendages. Steve Costa found it resting on a stump during our field meeting in Launde Big Wood (see report in this newsletter). The species does not appear in the list of Leicestershire Coleoptera published in 1907 in the Victoria County History. It seems likely that this is the first county record for this attractive species, which is associated with dead wood, usually in ancient woodland.

Field Meetings, 1986

There will be a field meeting on Saturday, 17th May at 10.00a.m. at Saddington Reservoir. Meet on the road running past the reservoir, map reference OS 141, SP 665911.

This meeting should not be missed, as this site is proving to be the best aquatic marginal site in the county. Recent captures include Pterostichus gracilis, Carabus monilis, Agonum livens, Acupalpus consputus, Helophorus nanus and Carpelimus lindrothi, the only record outside East Anglia. Older records include Blethisa multipunctata and Bagous lutosus.

In the afternoon it may prove possible to visit Nevill Holt Quarry, one of only two modern sites for Timarcha tenebricosa in the county.

Other field meetings can be arranged depending on the interest shown at Saddington.

Field Meeting Reports, 1984

The June and November meetings were cancelled. A hastily rearranged trip on 23rd June to Pickworth Great Wood produced 77 species including Staphylinus nero, Malthodes maurus, and Magdalis carbonaria. The other meetings reported below all provided useful lists which help us build a picture of the modern coleopterous fauna of the county.

Stanford Reservoir, 21st June 1984

Of particular interest at this site were Pterostichus gracilis and Coccidula scutellata, both of which seem to be thinly distributed in this country. The 76 species recorded are listed below:

A	general sweeping	F	on sallow
B	in open water of reservoir	G	on osier
C	on poplar	H	on scentless mayweed
D	on nettles	I	in marsh litter
E	on willow	J	on shore of reservoir
		K	on willowherb

Carabidae

Elaphrus riparius	J
Dyschirius luedersi	J
Bembidion aeneum	J
B. articulatum	J
B. dentellum	J
B. quadrimaculatum	J
B. varium	J
Pterostichus gracilis	J
Agonum marginatum	J
Stenolophus mixtus	J
Dromius quadrinotatus	J

Halipilidae

Halipilus immaculatus	B
-----------------------	---

Dytiscidae

Hygrobia versicolor	B
Potamonectes elegans	B
Agabus sturpii	B

Gyrinidae

Gyrinus substriatus	B
---------------------	---

Hydrophilidae

Helophorus brevipalpis	B, J
H. grandis	J
Cerocyon marinus	J
Megasternum obscurum	J
Anacaena globulus	B
Laccobius striatulus	B
Enochrus testaceus	B

<u>Hydraenidae</u>			
Ochthebius minimus	B, J	Coccinella septempunctata	D
Hydraena testacea	J	C. undecimpunctata	H
		Propylea 14-punctata	A
<u>Staphylinidae</u>		<u>Tenebrionidae</u>	
Carpelimus rivularis	J	Lagnia hirta	A
Platystethus cornutus	J		
Anotylus rugosus	J	<u>Scaptiidae</u>	
Stenus biguttatus	J	Anaspis maculata	A
S. coops	J	A. regimbarti	A
Philonthus emicans	J		
P. quisquiliaris	J	<u>Chrysomelidae</u>	
Quedius molochinus	I	Phaedon armoraciae	J
Tachyusa atra	J	P. cochleariae	B
Gnypeta rubrior	J	Plagiodera versicolora	E
Alloconota gregaria	A	Phyllodecta laticollis	C
		P. vitellinae	C, G
<u>Heteroceridae</u>		Galerucella lineola	G
Heterocerus fenestratus	J	G. sagittariae	A
		Altica lythri	X
<u>Cantharidae</u>		Chalcoides fulvicornis	C
Cantharis lateralis	A	Chaetocnema concinna	A
C. nigra	A	Psylliodes affinis	A
C. rufa	A		
C. nigricans	A	<u>Apionidae</u>	
Rhagonycha fulva	A	Apion apricaria	A
Malthodes minimus	A, E	A. ervi	A
		A. malvae	A
<u>Anobiidae</u>			
Ptilinus pectinicornis	E	<u>Curculionidae</u>	
		Phyllobius roboretanus	D
<u>Nitidulidae</u>		Sitona sp.	A
Kateretes bipustulatus	A	Hypera nigrirostris	A
		Dorytomus sp.	C, F
<u>Cryptophagidae</u>		Curculio salicivorus	F
Telmatophilus typhae	K	Cidnorrhinus quadrimaculatus	D
<u>Coccinellidae</u>			
Coccidula scutellata	K	Recorders: Steve Costa	
Anisosticta 19-punctata	I	Graham Finch	
Adalia bipunctata	C, D	Derek Lott	
A. decempunctata	G		

Misterton, 1st September 1984

This meeting was mainly distinguished by a visit to a local inn, which specialised in Malay and Thai cuisine. A visit to the Severn-Trent Misterton collecting grounds, however, encountered dry conditions in many of the marshy areas. Nevertheless 76 species were recorded including a rare flea beetle, Aphithona nigriceps which is associated with meadow cranesbill.

- | | | | |
|---|---------------------|---|---------------|
| A | swept, grassy verge | E | sedge refuse |
| B | on spruce | F | panicle sedge |
| C | stream | G | on willow |
| D | marsh vegetation | H | on alder |
| | | I | on willow |

Carabidae

Bemboidion aeneum	C, D
B. guttula	D, E
Pterostichus diligens	E
Agonum fuliginosum	E
Amara aenea	A
A. aulica	A
Demetrius atricapillus	D, F

Dytiscidae

Platambus maculatus	C
Agabus paludosus	C

Hydrophilidae

Helophorus brevipalpis	C, D
H. obscurus	D
Anacaena globulus	C

Staphylinidae

Anotylus rugosus	D
Stenus flavipes	E
S. latifrons	D
S. nitidiusculus	E
S. similis	E
S. solutus	E
S. subaeneus	E
Lathrobium brunnipes	D
Xantholinus longiventris	D
Heterothops dissimilis	E
Quedius mesomelinus	E
Antenus lyonessius	E
Tachyporus chrysomelinus	D
T. hypnorum	C, D
T. obtusus	D, E
T. pallidus	E
Cypha longicornis	E
Oligota punctulata	E
Hygronoma dimidiata	D, E
Amischa decipiens	E
Atheta fungi	D, E
Aleochara bipustulata	D

Clambidae

Calyptomereus dubius	E
----------------------	---

Nitidulidae

Brachypterus glaber	A
Pria dulcamarae	A

Silvanidae

Psammoecus bipunctatus	D, E
------------------------	------

Phalacridae

Olibrus aeneus	A
Stilbus testaceus	D

Coccinellidae

Coccidula rufa	D
Scymnus haemorrhoidalis	D
Chilocorus renipustulatus	D
Aphidecta oblitterata	B
Adalia bipunctata	A
A. decempunctata	D
Coccinella septempunctata	A, D
Propylea quattuordecimpunctata	D
Anatis ocellata	G
Thea vigintiduopunctata	A, D

Lathridiidae

Stephostethus lardarius	D, E
Aridius bifasciatus	H
Leptinoleuca gibbosa	D

Chrysomelidae

Oulema melanopa	A
Plagioderma versicolora	G
Phaedon armoraciae	C
Galerucella lineola	H
G. tenella	D
Lochmaea crataegi	A
Phyllotreta undulata	D
Aphthona nigriceps	D
Longitarsus luridus	A
Altica lythri	D
Crepidodera transversa	F
Chaetocnema concinna	D
C. hortensis	D
Sphaeroderma testaceum	D
Psylliodes chrysocephala	G
Cassida viridis	D

Apionidae

Apion dichroum	E
A. ervi	A

Curculionidae

Sitona lineatus	D
Cionus scrophulariae	D
Ceutorhynchus assimilis	D, E
Curculio salicivorus	I
Rhynchaenus salicis	I

Recorders: Tony Drane, Mary Hider, Derek Lott

Launde Big Wood, 22nd September 1984

73 species of Coleoptera were recorded at this meeting together with a hornet's nest. A second nest nearby was discovered by Graham, when he was stung on the neck. As well as Platycis minuta, several other species aroused interest notably Atheta pallidicornis.

- | | |
|----------------------------------|--------------------------------------|
| A swept, woodland edge | M rotten log |
| B field maple | N rotten fungus on log |
| C woodland edge | O beaten, dead branches |
| D on elm stump | P willow |
| E thistles | Q water-filled ruts in ride |
| F Polyporus squamosus | R birch |
| G gill fungus | S dead carrion crow on keeper's line |
| H swept, nettles/hedge woundwort | T under litter in ride |
| I ash | U under bark |
| J under litter in ride | V dead birch log |
| K grass tussock in ride | W dead standing birch |
| L dead branch with fungus | X remains under loose elm bark |
| | Y guelder rose |

Carabidae

- | | | | |
|-------------------------|------|----------------------|------|
| Leistus ferrugineus | J | Gyrophana fasciata | |
| Nebria brevicollis | C | G. gentilis | |
| Notiophilus biguttatus | V | G. latissima | |
| Amara plebeja | K | Leptura fumida | L, U |
| Demetrius atricapillus | E | L. ruficollis | L, U |
| Dromius quadrimaculatus | L, O | Amischa decipiens | J |
| D. quadrinotatus | O | Geostiba circellaris | V |
| | | Atheta liturata | F, N |
| | | A. pallidicornis | F |

Hydrophilidae

- | | | | |
|--------------------|---|---------------------|------|
| Helophorus minutus | O | A. fungi | C, K |
| Anacaena globulus | O | A. castanoptera | F |
| | | A. crassicornis | F, S |
| | | A. laticollis | |
| | | Phloeopora testacea | |
| | | Oxyopoda alternans | |
| | | Aleochara sparsa | S |

Leiodidae

- | | |
|----------------|---|
| Catops tristis | S |
|----------------|---|

Silphidae

- | | |
|--------------------------|---|
| Nicrophorus vespilloides | S |
|--------------------------|---|

Staphylinidae

- | | |
|--------------------------|------|
| Proteinus brachypterus | F |
| Stenus brunnipes | J, K |
| Lathrobium brunnipes | J |
| Othius punctulatus | M |
| Philonthus laminatus | K |
| P. sanguinolentus | K |
| P. varius | J |
| Quedius cruentus | N |
| Q. fuliginosus | M |
| Q. nigriceps | T |
| Lordithon lunulatus | N |
| L. trinotatus | G |
| Tachyporus chrysomelinus | J |
| T. hypnorum | J |
| T. nitidulus | J |
| T. obtusus | H |

Anobiidae

- | | |
|------------------------|---|
| Anobium punctatum | K |
| Ptilinus pectinicornis | K |

Lycidae

- | | |
|-----------------|---|
| Platycis minuta | D |
|-----------------|---|

Phalacridae

- | | |
|-------------------|---|
| Stilbus testaceus | A |
|-------------------|---|

Coccinellidae

- | | |
|--------------------------------|-------------|
| Scymnus auritus | B |
| Chilocorus renipustulatus | very common |
| Coccinella septempunctata | very common |
| Propylea quattuordecimpunctata | H |
| Calvia quattuordecimguttata | R |

Lathridiidae

- | | |
|---------------------|---|
| Corticicara gibbosa | L |
|---------------------|---|

<u>Mycetophagidae</u>		<i>Pyrrhalta viburni</i>	Y
<i>Pseudotriphyllus suturalis</i>	F	<i>Lochmaea orataegi</i>	G
		<i>Longitarsus luridus</i>	A
<u>Salpingidae</u>		<i>Chalcoides fulvicornis</i>	P
<i>Rhinosimus ruficollis</i>	W	<i>Chaetocnema concinna</i>	H
		<i>Psylliodes chrysocephala</i>	P
		<i>Cassida rubiginosa</i>	H
<u>Melandryidae</u>			
<i>Orchesia minor</i>	U	<u>Apionidae</u>	
		<i>Apion subulatum</i>	I
<u>Anthicidae</u>			
<i>Anthicus floralis</i>	H	<u>Curculionidae</u>	
		<i>Sciaphilus asperatus</i>	K
<u>Cerambycidae</u>		<i>Dorytomus rufatus</i>	P
<i>Pogonocherus hispidulus</i>	E	<i>Cidnorhinus quadrimaculatus</i>	E
		<i>Ceutorhynchus assimilis</i>	B
<u>Chrysomelidae</u>		<i>C. litura</i>	A
<i>Oulema melanopa</i>	C		
<i>Phyllodecta laticollis</i>	C		

Recorders: Steve Costa, Tony Drane, Graham Finch, Nona Finch, Derek Lott.

Grace Dieu Wood, 20th October 1984

The attendance at this meeting was somewhat poor, but the sole participant did manage to record 60 species including the leaf beetle, Chrysolina oricalcia from a woodland ride.

Future editions of the Newsletter

Later this spring the CRS Newsletter will metamorphose into a new series covering all entomological recording in Leicestershire. Coleoptera will of course be well represented and the first issue will contain reports of 1985 field meetings at Ketton Quarry and musk beetle hunts. If you would like to receive this newsletter please complete and return the enclosed form.

Derek Lott